

High Density 10/100/1000UTP Tap



Features

- No point of failure
- No package loss
- Link Redundancy
- Redundant Power
- Power over Ethernet compliant
- 3 years warranty

Order Number

C8-1G

The High Density 1000BaseT Tap avoids downtime in your 10/100/1000BaseT network. Once in place it enables you to monitor half/full duplex communication and move test equipment without breaking the circuit.

The passive Tap is fully transparent to the network devices and mirrors full duplex traffic as if monitor devices were in-line. It has no IP address and is none-intrusive for 100% security. Unlike SPAN ports it monitors all seven (7) protocol layers and any package size including errors.

The Permanent Network Link feature guarantees permanent network connectivity even when power fails. No packages are lost at power failure. Fully IEEE 802.3 / 802.3af and VoIP compliant, it works at distances over 100mtr.

Self explanatory LED functions, each port shows the presence of both the Link and Activity, the Speed LEDs show if the TAP is in Speed negotiation mode or has agreed on a common Speed. Two (2) power LEDs show redundant power.

Its low power consumption does not require an internal fan for cooling. The small fans used in competitors' solutions make noise and shorten the lifetime of the product.

It is designed for redundant networking. Any network link failure is transferred to activate auto-negotiation or redundant path.

It is Redundant powered for maximum monitoring uptime.

The Tap is 802.3 compliant and none-intrusive to the network. Network ports A and B are hardwired together and the Tap does not introduce a point of failure in the network.

It has no IP address and is invisible to the network.

The High Density 10/100/1000UTP Tap can be redundant powered. Using the redundant power feature guarantees a maximum monitoring uptime off the monitor ports. Two (2) LEDs show the presence of power. The Tap is fully functional using only one power.

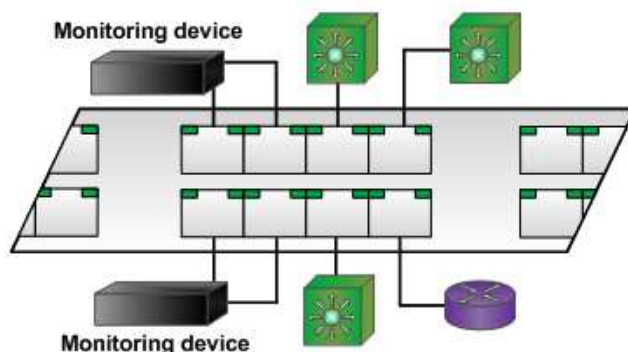
The bypass circuitry guarantees permanent network connectivity, also when power fails. No data is passed to the Tap ports at power failure.

The Tap ports are galvanical separated from the network ports and in such way protecting your monitoring equipment from PoE.

Included accessories :



2 x Power Cords



Connectors: 2 x 8-20 RJ45, 8PIN
Power: 90-240V, 50-60Hz, 100W
Operation temperature: 0 to 50°C
Storage Temperature: -10 to 80°C
Operating Humidity: 10 to 90%, no condensing
Enclosure: Metal, structured black oven painted
Dimensions: 44 x 250 x 440 cm - (483 cm front plate) - High x Deep x Wide
Weight: 2,2 kg